

# SUSTAINABILITY SPEAKER SERIES

## Spring 2024



Grandmother and grandson sorting various kinds of waste into different cellophane sacks while standing by a large table in a garage.

### EMBARK ON THE GREEN JOURNEY: UNVEIL SUSTAINABLE SOLUTIONS WITH OUR SUSTAINABILITY SERIES PROGRAM

Join our Sustainability Series for a diverse lineup of sessions addressing critical sustainability and environmental topics. Learn about opportunities to access funding for sustainable energy upgrades, innovative composting practices, methods to reduce food wastes, effective recycling strategies, and fostering sustainability in the tourism industry. Led by experts, this program equips participants with the knowledge to make a positive environmental impact.

### UPCOMING SESSIONS

**January 9<sup>th</sup> - 12:00 to 1:00 p.m. (ET)**

#### **Inflation Reduction Act: Funding for Sustainable Energy Upgrades**

Legislation aimed at curbing inflation through strategic economic measures and financial allocation to support the enhancement of energy systems for long-term sustainability.

**Speaker: Erica Tobe, Ph.D.**

**February 13<sup>th</sup> - 12:00 to 1:00 p.m. (ET)**

#### **Composting**

A discussion by Carter's Compost - Megan Alexander, highlighting their collection and delivery service utilizing bicycles with trailers to transport food scraps from kitchens to nearby composting sites.

**Speaker: Carter's Compost - Megan Alexander**

### CONTACT US:

**ANDY NORTHROP**

northro5@msu.edu

**MARIE RUEMENAPP**

ruemenap@msu.edu

**BETHANY PRYKUCKI**

prykucki@msu.edu

### REGISTRATION LINK

<https://events.anr.msu.edu/SusSpkSpring24/>

### SCAN QR CODE FOR MORE INFO



## UPCOMING SESSIONS (CONTINUED)

**March 12<sup>th</sup> - 12:00 to 1:00 p.m. (ET)**

### FoodPrint

Discussing how you can reduce your household's FoodPrint on the environment by reducing food waste and eating more sustainably.

**Speaker: Rob Serrine, Ph.D.**

**April 9<sup>th</sup> - 12:00 to 1:00 p.m. (ET)**

### Recycling

Delving into the significance and strategies for effective recycling practices.

**Speaker: Kerrin O'Brien**

**May 14<sup>th</sup> - 12:00 to 1:00 p.m. (ET)**

### Sustainable Tourism Strategies

Talk on fostering environmentally conscious approaches in the tourism industry for a sustainable future.

**Speaker: Andy Northrop**

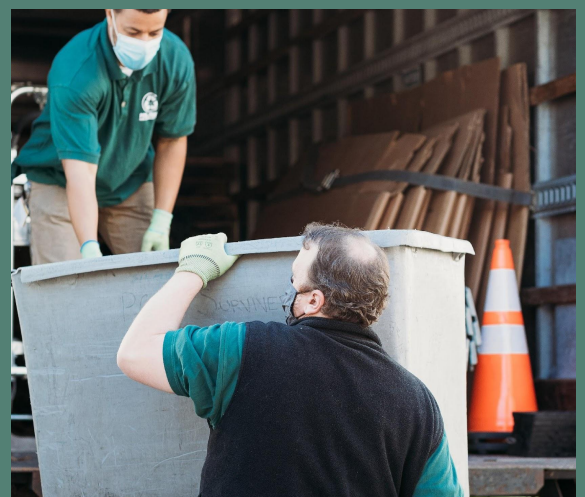
MSU is an affirmative-action, equal-opportunity employer, committed to achieving excellence through a diverse workforce and inclusive culture that encourages all people to reach their full potential. Michigan State University Extension programs and materials are open to all without regard to race, color, national origin, gender, gender identity, religion, age, height, weight, disability, political beliefs, sexual orientation, marital status, family status or veteran status. Issued in furtherance of MSU Extension work, acts of May 8 and June 30, 1914, in cooperation with the U.S. Department of Agriculture. Quentin Tyler, Director, MSU Extension, East Lansing, MI 48824. This information is for educational purposes only. Reference to commercial products or trade names does not imply endorsement by MSU Extension or bias against those not mentioned.



Green-leafed plants in hanging cans.



Assorted stacks of cardboard boxes.



Men loading recycling bins onto a truck.